



LIVING IN PORTO



In the westernmost point of Europe, between the beaches of the Atlantic Ocean and the vineyards and steep slopes of the Douro River, in northern Portugal, you will find Porto, the second largest city in the country and one of its main economic and industrial centres.

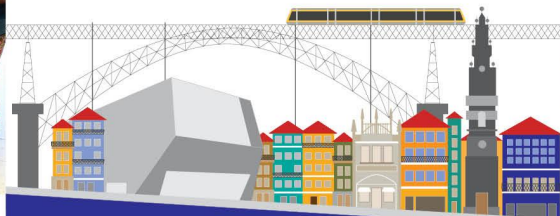
Porto is a multicultural city with large green spaces and sports facilities. It has good accesses, a revitalised public transportations network and a vibrant cultural environment enriched by the more than 70 thousand Higher Education students living in the region.

Classified as UNESCO World Heritage Site, Porto also stands out for its unique gastronomy and hospitality of its people.

PORTO HAS BEEN ELECTED "BEST EUROPEAN DESTINATION" FOR THE THIRD TIME

U.PORTO

www.up.pt



CONTACTS

Academic Affairs  
formacao@reit.up.pt / acesso.es@reit.up.pt

International Office  
www.up.pt/internacional  
international@reit.up.pt

f universidadedoporto

u porto

in universidadedoporto

universidadedoporto

UNIVERSITY OF PORTO



THE MOST SOUGHT-AFTER UNIVERSITY IN PORTUGAL

U.PORTO

STUDY AT U.PORTO

The U.Porto has a vibrant and multicultural environment to which more than 4000 international students contribute, every year. The institution offers exceptional conditions to students, researchers and also to employers. Its Science and Technology Park - UPTEC - hosts around 200 start-ups and more than 2000 highly qualified staff.

THE MAJORITY OF THE INTERNATIONAL RANKINGS RATE THE UNIVERSITY OF PORTO AS ONE OF THE BEST 150 EUROPEAN UNIVERSITIES

31 820 STUDENTS | 2 365 TEACHING STAFF | 167 Nationalities

278 PROGRAMS | 14 SCHOOLS

1 BUSINESS SCHOOL | 16 LIBRARIES | 4 SPORTS CENTRES

49 RESEARCH CENTRES

9 HALL OF RESIDENCES

20 CANTEENS, CAFETERIAS AND CATERING FACILITIES

## WHAT CAN I STUDY AT U.PORTO?

52

UNDERGRADUATE/ BACHELOR  
AND INTEGRATED MASTER  
PROGRAMMES

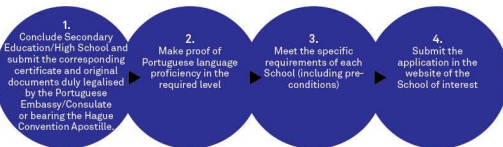
124

MASTER PROGRAMMES

84

DOCTORAL/  
PHD PROGRAMMES

## WHAT IS REQUIRED TO STUDY AT U.PORTO?



The conditions listed above apply exclusively to Undergraduate/Bachelor and Integrated Master Programmes. For detailed information, please contact the corresponding School and the International Office of the U.Porto.

## WHEN CAN I APPLY?

### 1<sup>ST</sup> PHASE

Applications between  
**December and January**

### 2<sup>ND</sup> PHASE

Applications between  
**March and April**

### 3<sup>RD</sup> PHASE

Applications between  
**June and July**

For more information, please visit the U.Porto website or the webpage of your School of interest.

## € HOW MUCH WILL I PAY?

### 100€ APPLICATION FEE

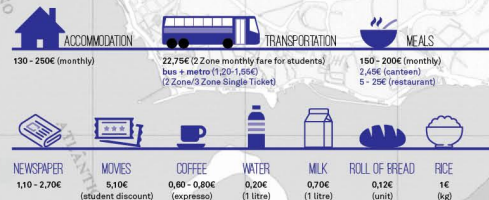
In the special admission proceedings for international students' access to Higher Education.

The annual fee for international students, at the University of Porto, varies between 3000€ and 8500€, with the possibility of payment in 10 monthly instalments (except for PhD programmes).

Students from CPLP Countries (Community of Portuguese-Speaking Countries) can enjoy of a reduction up to 50% of the indicated values.

In addition to eventual support in the country of origin, the different Schools of the University of Porto have incentive mechanisms in place available to international students. For more information, please visit the U.Porto website or the webpage of your School of interest.

## \$ WHAT IS THE AVERAGE COST OF LIVING IN PORTO?



## U.PORTO CAMPUS

### CAMPUS ASPRELA

Nutrition and Food Sciences  
Sports  
Economics  
Engineering  
Medicine  
Dental Medicine  
Psychology and Education Sciences

### CAMPUS CAMPO ALEGRE

Architecture  
Sciences  
Arts and Humanities

### CAMPO ALEGRE

### CAMPUS CITY CENTER

Fine Arts  
Law  
Pharmacy  
Biomedical Sciences

### ASPRELA

### CITY CENTER

## ≡ EDUCATION OFFER/ UNDERGRADUATE LEVEL

### SCHOOL OF ARCHITECTURE

Architecture

### SCHOOL OF FINE ARTS

Communication Design  
Fine Arts

### SCHOOL OF SCIENCES

Biochemistry  
Biology  
Landscape Architecture  
Computer Science  
Engineering Sciences  
Environmental Sciences and Technology  
Physics  
Geology  
Mathematics  
Chemistry  
Network and Information Systems Engineering  
Physical Engineering

### SCHOOL OF NUTRITION AND FOOD SCIENCES

Nutritional Sciences

### SCHOOL OF SPORTS

Sports Sciences

### SCHOOL OF LAW

Criminology  
Law

### SCHOOL OF ECONOMICS (and Management)

Economics  
Management

### SCHOOL OF ENGINEERING

Engineering Sciences - Mining and Geo-  
Environmental Engineering  
Bioengineering  
Civil Engineering  
Environmental Engineering  
Electrical and Computers Engineering

Engineering and Industrial Management  
Informatics and Computing Engineering  
Mechanical Engineering  
Metallurgical and Materials Engineering  
Chemical Engineering

### SCHOOL OF PHARMACY

Pharmaceutical Sciences

### SCHOOL OF ARTS (and Humanities)

Applied Languages  
Archaeology  
Communication Sciences: Journalism, Public  
Relations, Multimedia  
Information Science  
Language Sciences  
Portuguese and Lusophone Studies  
Philosophy  
Geography  
History  
History of Art  
Languages and International Relations  
Languages, Literatures and Cultures  
Sociology

### SCHOOL OF MEDICINE

Medicine

### SCHOOL OF DENTAL MEDICINE

Dental Medicine

### SCHOOL OF PSYCHOLOGY AND EDUCATION SCIENCE

Educational Sciences  
Psychology

### INSTITUTE OF BIOMEDICAL SCIENCES ABEL SALAZAR

Aquatic Sciences  
Medicine  
Veterinary Medicine

The Programmes/Study Cycles in Medicine, Dental Medicine e Veterinary Medicine are not accessible via the special admission proceedings for international students. The Education Offer described above refers only to undergraduate programmes (Bachelor and Integrated Master). U.Porto has an extensive offer of MSc and PhD Programmes in all major fields of study. For additional information about the application for these Programmes, please contact the corresponding School.